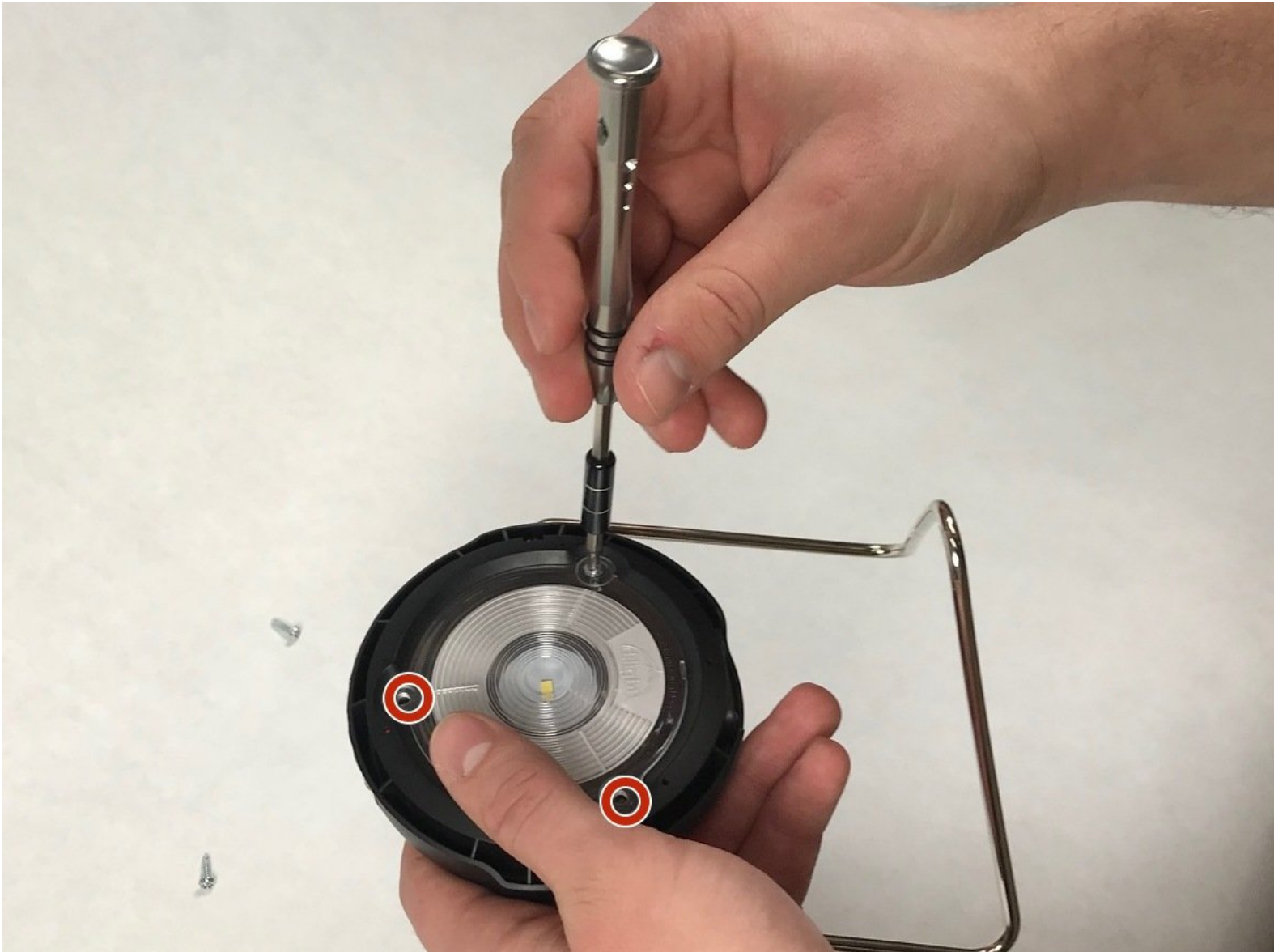




# d.light Solar Lantern S2 Circuit Board Replacement

This guide shows how to replace the circuit board.

Written By: Jeremiah Rhoades

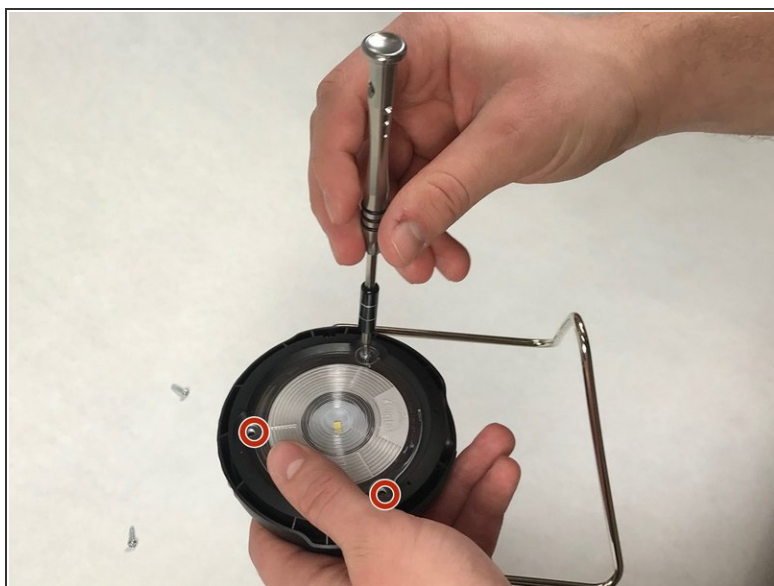




## TOOLS:

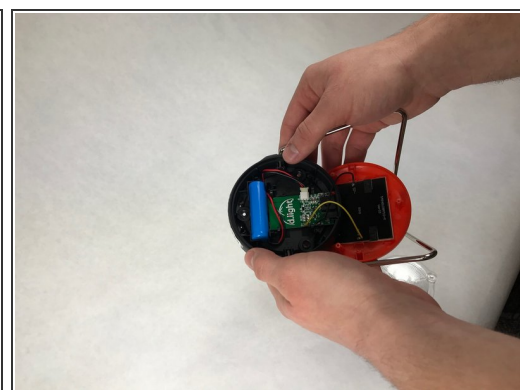
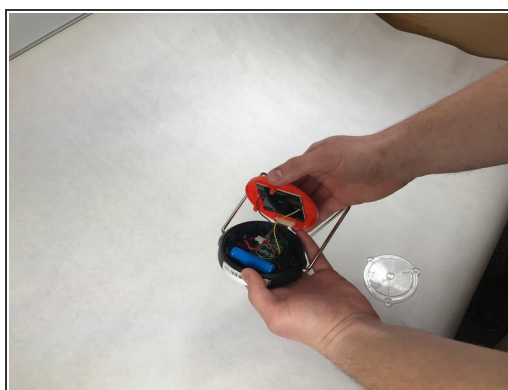
- [T15 Security Torx Screwdriver](#) (1)
- [Soldering Iron](#) (1)
- [Flush Wire Cutters](#) (1)
- [Spudger](#) (1)

## Step 1 — Circuit Board



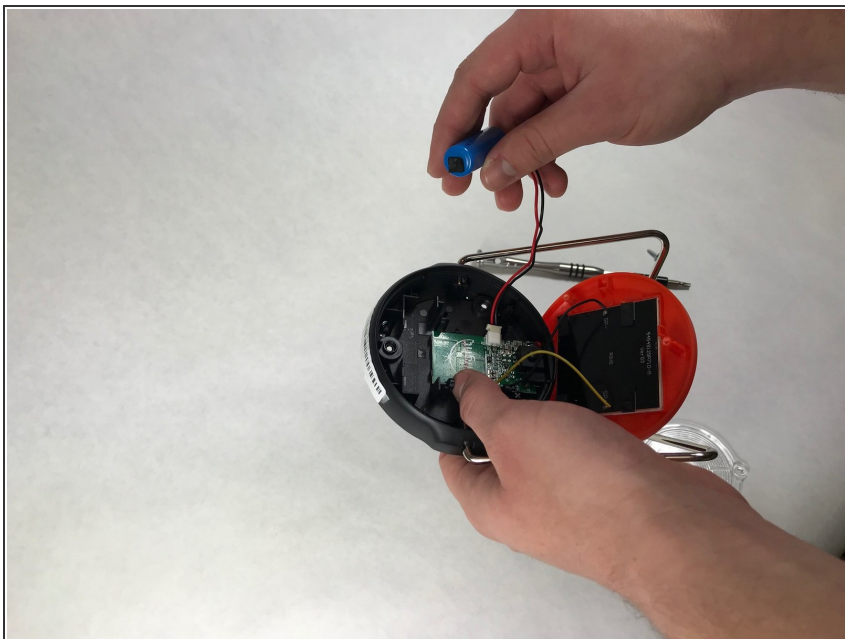
- To remove the lens, three T15 x 12.5mm screws must be removed by a T15 head screwdriver.
- The location of the other two screws are marked in red.

## Step 2



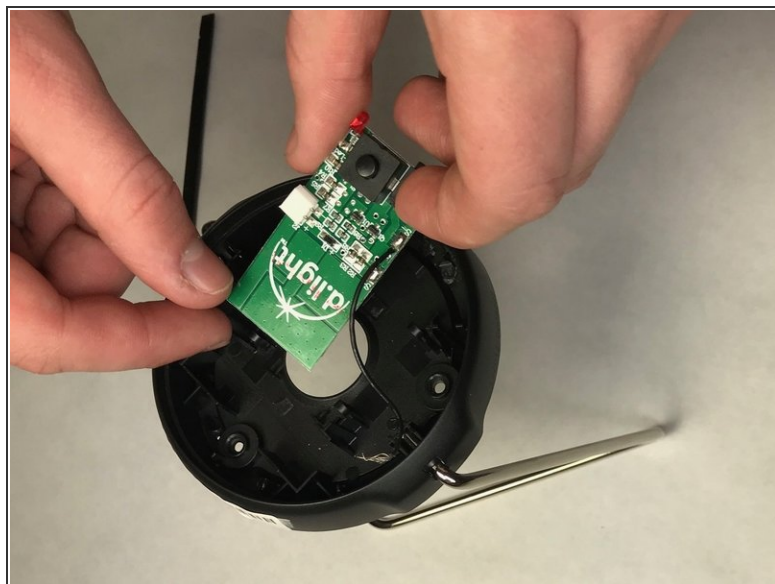
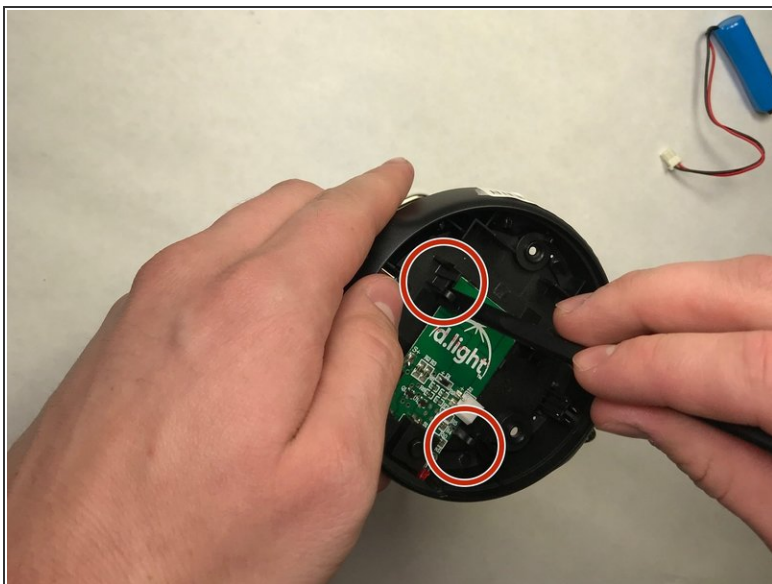
- After the lens has been removed the back cover needs to be removed. There are no snaps or screws holding it in place.

### Step 3



- Remove battery by unplugging it from the circuit board.

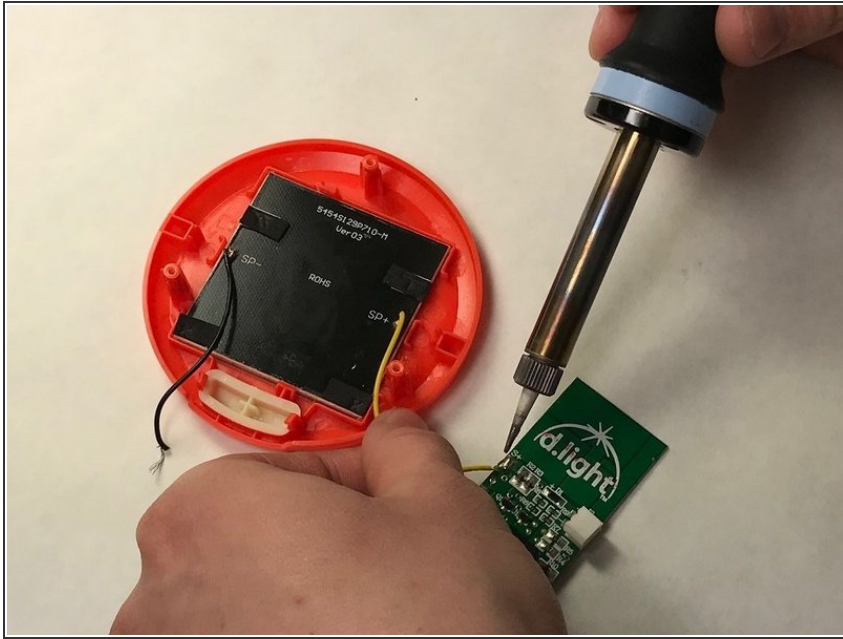
### Step 4



- Remove the circuit board by pressing on the mounting clips (shown in red circles) using the spudger.



## Step 5



- Desolder the wires to free the circuit board.

To reassemble your device, follow these instructions in reverse order.