



Written By: Joseph Swindeman



---

## INTRODUCTION

We will teach how to replace a faulty motherboard by severing its connection to the battery and removing it from the mounts.



### TOOLS:

- [iFixit Opening Picks set of 6](#) (1)
  - [Spudger](#) (1)
  - [Soldering Iron](#) (1)
-

## Step 1 — Brush Head



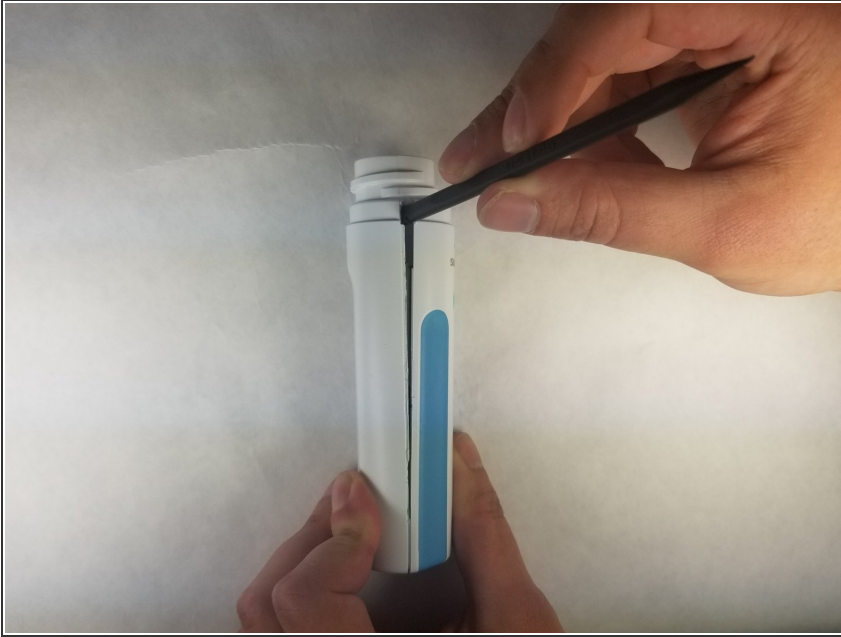
- Place one hand on the toothbrush handle and one on the toothbrush head.

## Step 2



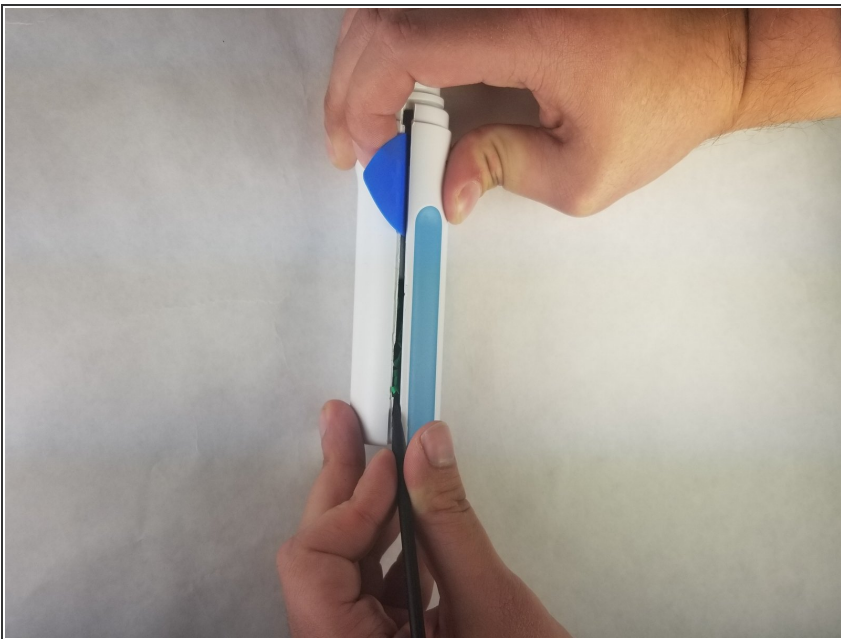
- Separate the toothbrush head from the body by twisting it in a counter-clockwise direction.

### Step 3 — Front Handle Panel



- Insert the spudger along the seam at the top of the panel.
- Begin to pry open the panel.

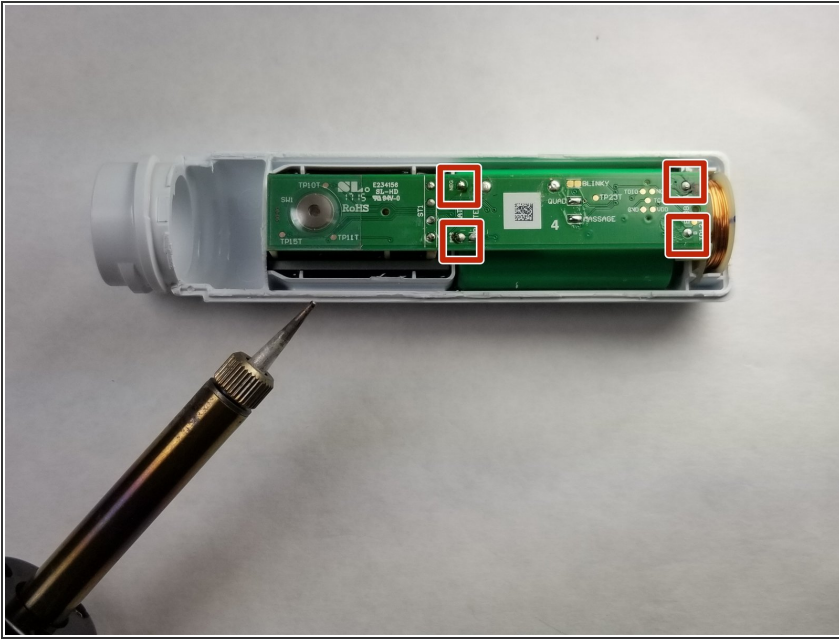
### Step 4



- Insert the plastic pick at the top of the seam that has already been slightly pried open.
- Continue down the seam, prying the rest of the panel open with the spudger.



## Step 5 — Motherboard



- Apply a soldering iron to the mount-connectors and copper-wire connectors until the motherboard can be removed.

## Step 6



- Lift the motherboard straight up.

To reassemble your device, follow these instructions in reverse order.