



Written By: Garrett barta



Page 1 of 6

---

## INTRODUCTION

A guide to replace the SUB/SD card/headphone jack within your Toshiba Radius.

---

### TOOLS:

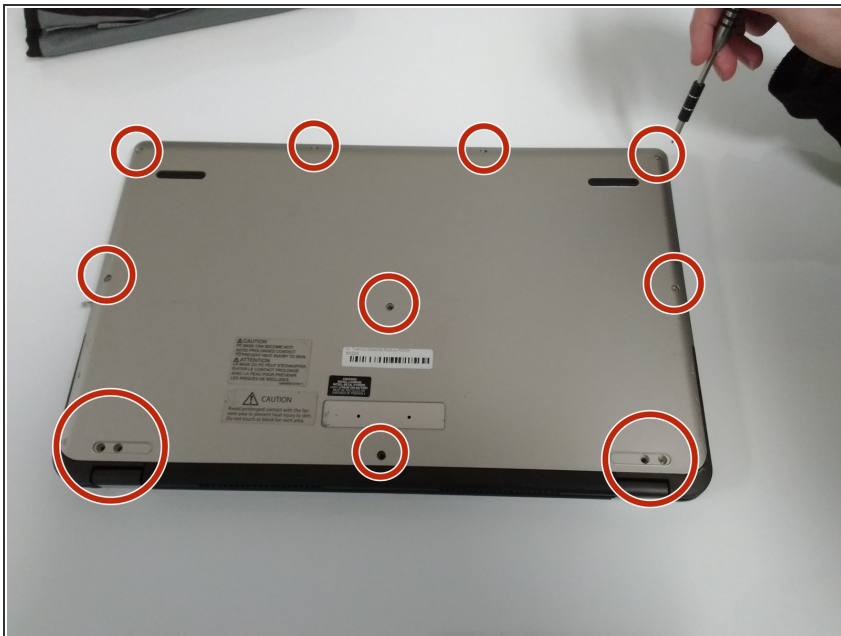
- [Phillips #0 Screwdriver](#) (1)
  - [iFixit Opening Tools](#) (1)
-

## Step 1 — Back Cover



- i Turn off the laptop before starting.
- Remove the two rubber feet closest to the hinge with a plastic opening tool.

## Step 2



- Remove the twelve M2x4mm PH0 Philips head screws.

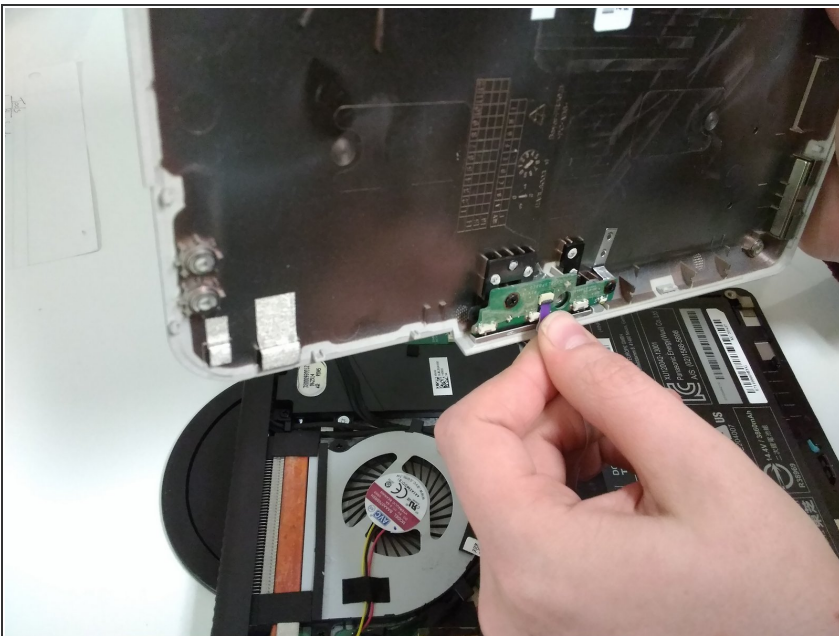


## Step 3



- Loosen the back cover with a plastic opening tool.
- ⓘ The least damaging way to pry the cover is to start from a corner and run the spudger along the edge.
- ⚠ Do not crack or bend the cover.

## Step 4



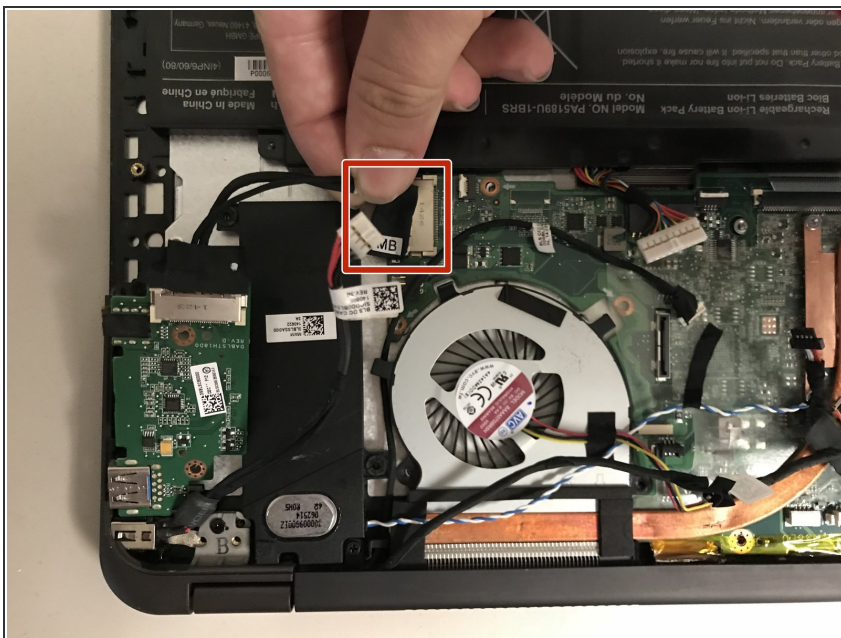
- Carefully lift open the cover.
- Remove the attached purple ribbon cable underneath the cover.
- ⚠ Do not rip the ribbon cable.

## Step 5 — USB/SD/headphone jack



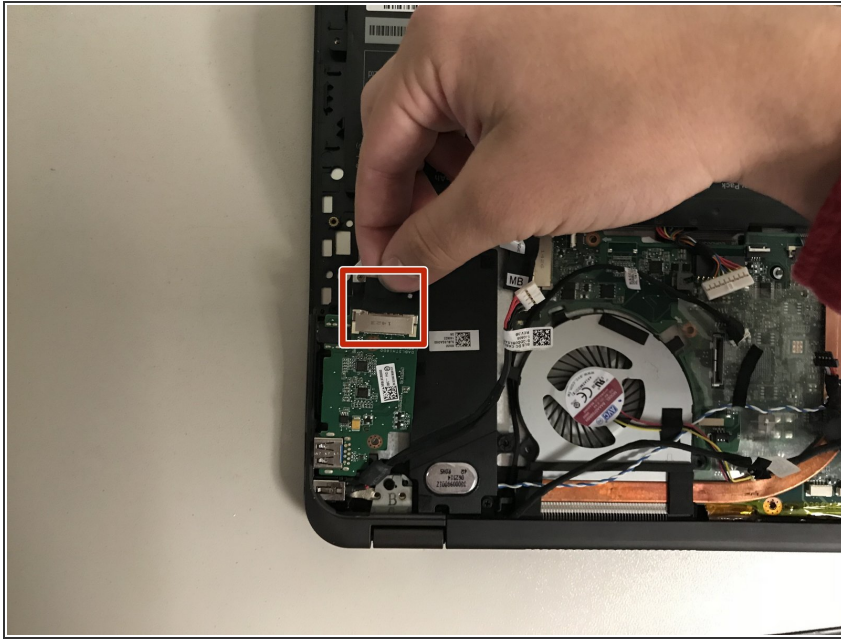
- Unscrew the two screws holding the panel of the UBS/SD card/headphone jack

## Step 6



- disconnect the cable shown from the motherboard

## Step 7



- disconnect the cable attached to the top of the USB/SD card/headphone jack interface

## Step 8



- remove the interface

To reassemble your device, follow these instructions in reverse order.