



# Asus X502CA-BCL0901D Webcam Replacement

If the laptop gets dropped or bumped too hard...

Written By: Gregory Browne



# INTRODUCTION

If the laptop gets dropped or bumped too hard the webcam cables may become disconnected or the webcam may break. This guide will show you how to replace it.

---

## TOOLS:

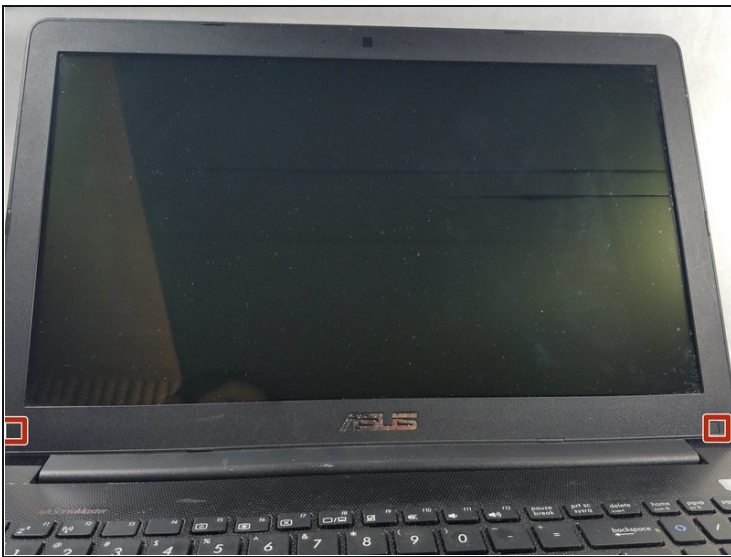
[Tweezers](#) (1)

[Phillips #00 Screwdriver](#) (1)

[iFixit Opening Tool](#) (1)

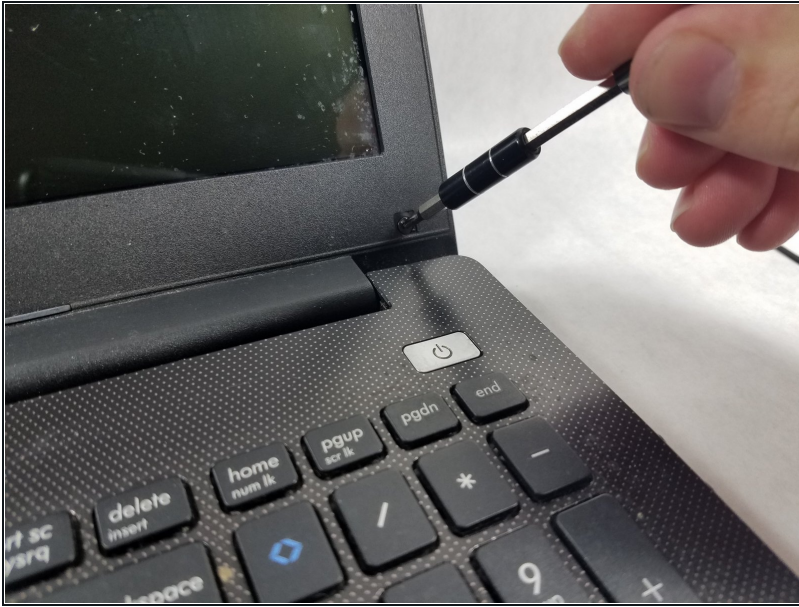
---

## Step 1 — Screen Frame



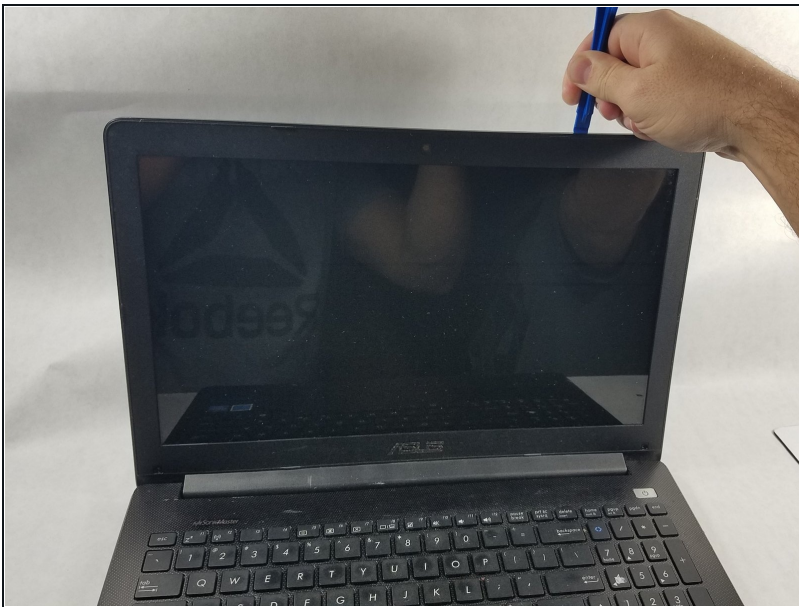
- Using the [tweezers](#), remove the 2 black plastic adhesive covers from the bottom corners of the screen frame.

## Step 2



- Use the Philips #00 screwdriver to remove the 2 screws that were revealed in the previous step.
- ① The screws are 20 mm in diameter and 50 mm long.

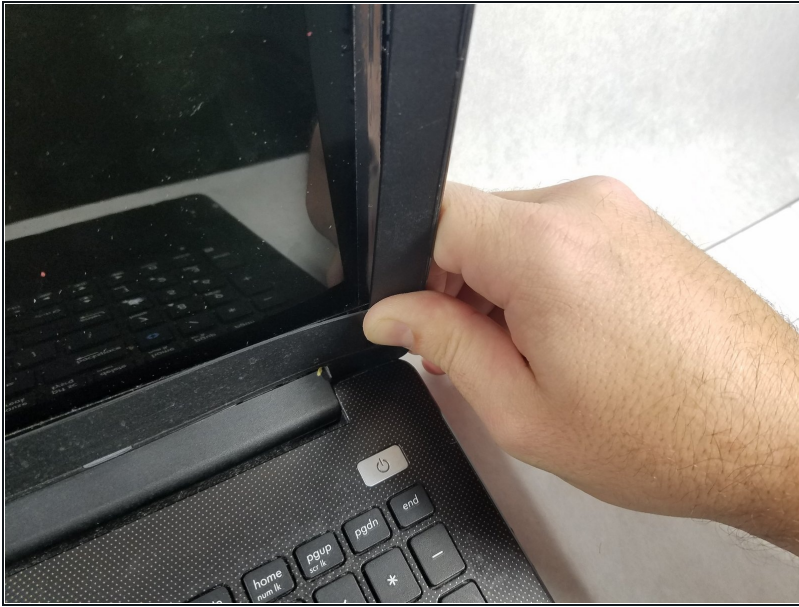
## Step 3



- Using the plastic opening tool, pry the screen frame away from the screen.



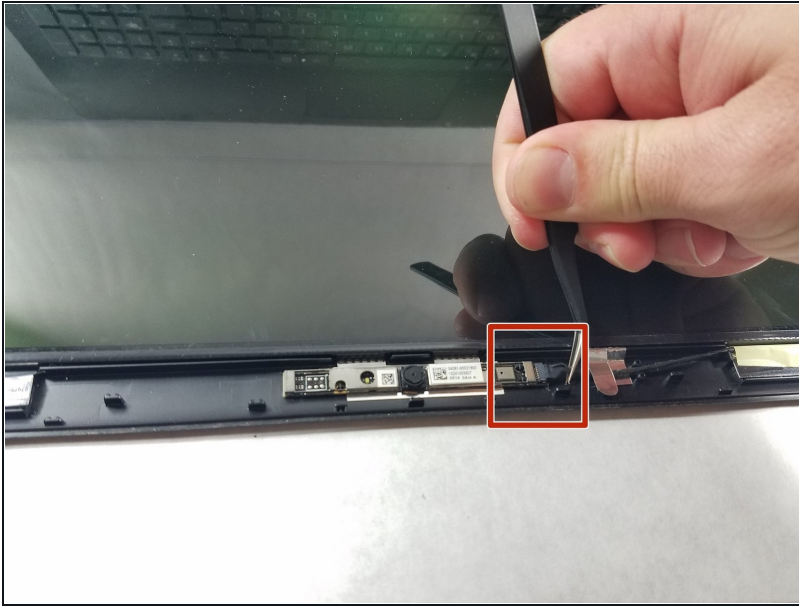
## Step 4



- Using your hands, grasp the screen frame at its base near the laptop hinge.
- While pulling the base of the screen frame away from the hinge horizontally, also lift up on the screen frame to disconnect it from the laptop hinge.

⚠ The space between the screen frame and laptop hinge is very small and the plastic for both parts is weak. However, a fair amount of force is required to disconnect the screen frame from the laptop hinge. Be careful during this step, or either of these plastic pieces may break.

## Step 5 — Webcam



- Using [tweezers](#), unplug the webcam wire from the webcam.
- ⓘ If this wire was already disconnected, that may be the cause of the webcam not functioning. Try reconnecting this wire and reassembling to see if the problem is resolved before continuing.

## Step 6



- Using fingers or tweezers, pry the webcam from the laptop.
- ⓘ The webcam is only secured with adhesive.

---

To reassemble your device, follow these instructions in reverse order.