



Dell Optiplex 745 Small Form Factor Graphics Card Replacement

In this guide, it will include step by step instructions in how to replace a graphics card. Also it will include detailed images for each step.

Written By: Daviel Almonte



This document was generated on 2020-11-21 02:08:21 AM (MST).

INTRODUCTION

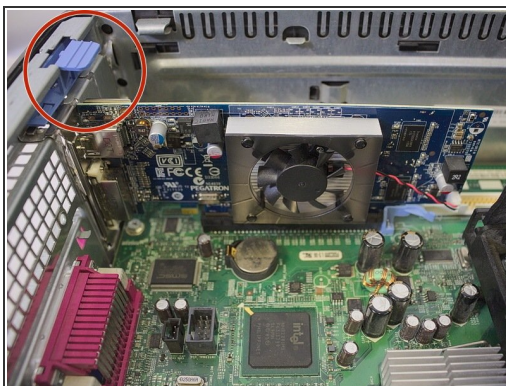
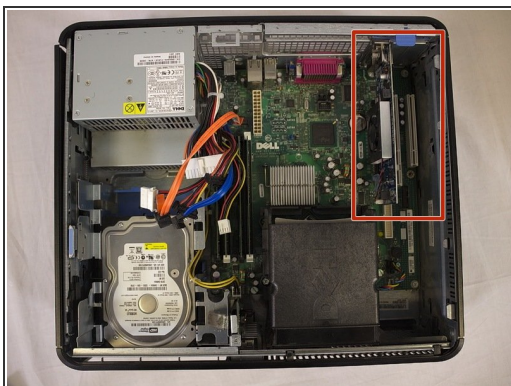
In this guide, it will include step by step instructions in how to replace a graphics card. Also it will include detailed images for each step.

Step 1 — Graphics Card



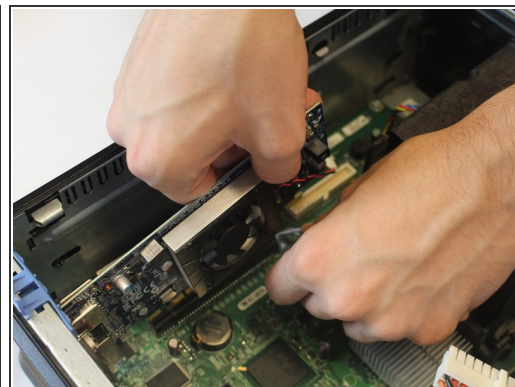
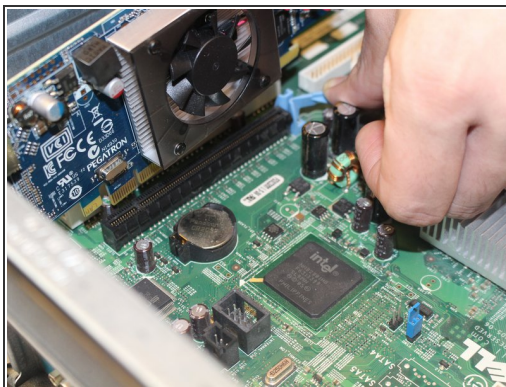
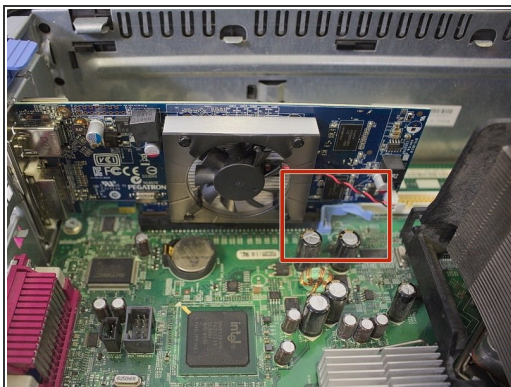
- Pull the tab on the cover to release the lid.
- Remove the cover to expose the computer.

Step 2



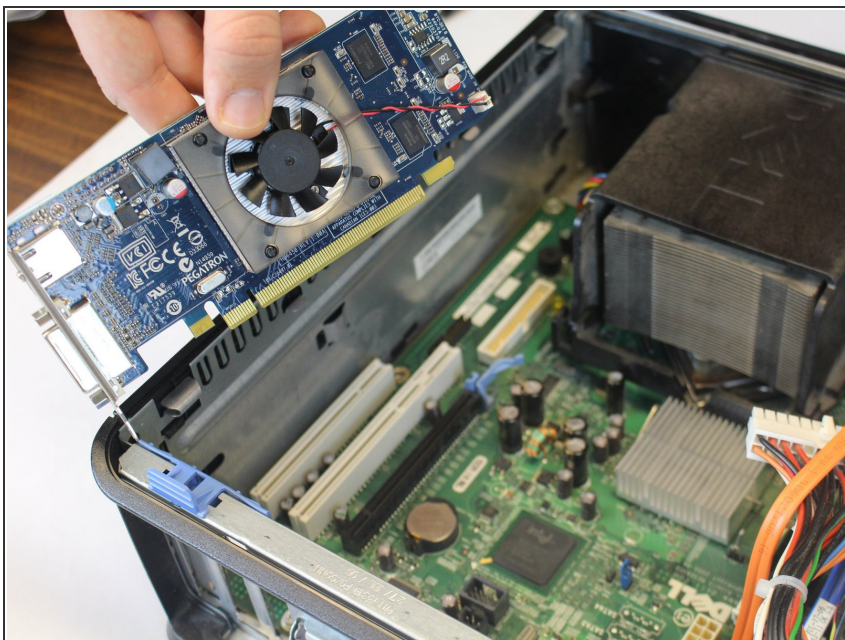
- The graphics card has a fan built into it and is fasten by two blue clips.
- Pull up the top blue clip that is above the graphics card while holding the graphics card in place.

Step 3



- Below the graphics card, there is a second clip that holds the card in place.
- With one hand, pull back the clip while lifting the graphics card with the other.

Step 4



- Remove the graphics card.

To reassemble your device, follow these instructions in reverse order.