



Dell Inspiron 15-7559 SSD Replacement

How to replace the SSD for the Dell Inspiron 15-7559

Written By: Trenton Greevebiester



INTRODUCTION

How to replace the SSD for the Dell Inspiron 15-7559



TOOLS:

- [iFixit Opening Tool](#) (1)
 - [Phillips #1 Screwdriver](#) (1)
-

Step 1 — Back Panel



- Turn off the computer.
- Disconnect the charging cable from the computer.
- ⚠ Failure to turn off the device and disconnect the cable could lead to personal injury or device damage.
- Flip the computer upside down.

Step 2



- Remove the captive screw located on the top section of the back panel, using a Philips #1 screwdriver.
- ⓘ Keep in mind that the screw cannot be fully removed from the panel, even when fully loosened.

Step 3



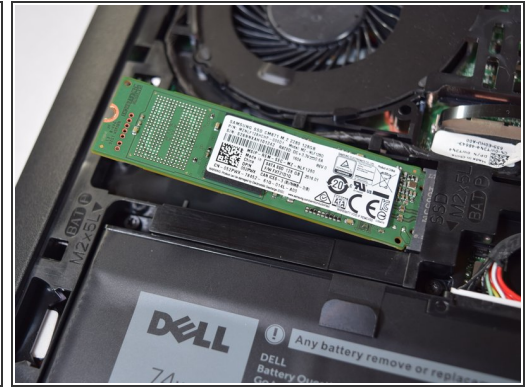
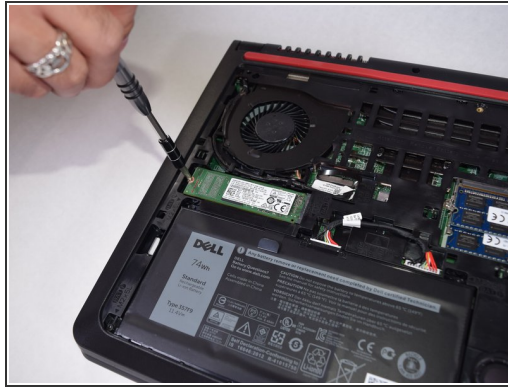
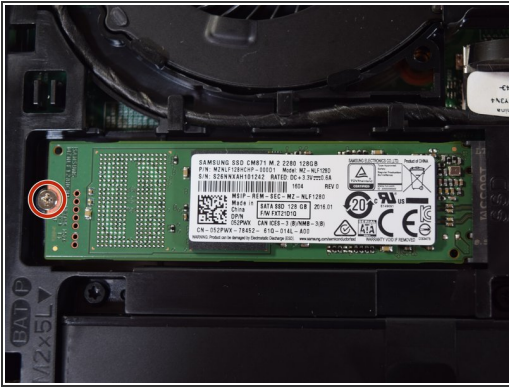
- Use the blue, plastic opening tool to gently pry a section of the back panel open.
- Next slide the opening tool around the back panel to disconnect the clips holding the panel in place.
- After the clips have been disconnected, the back panel can then be easily lifted off the computer.

Step 4 — SSD



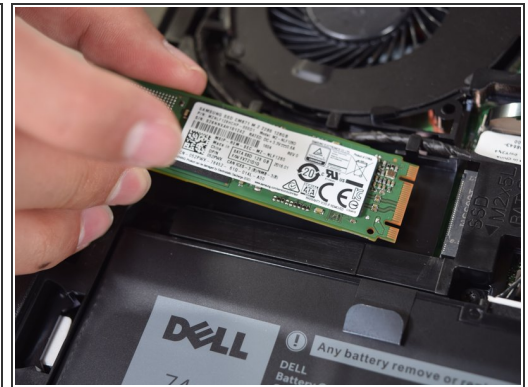
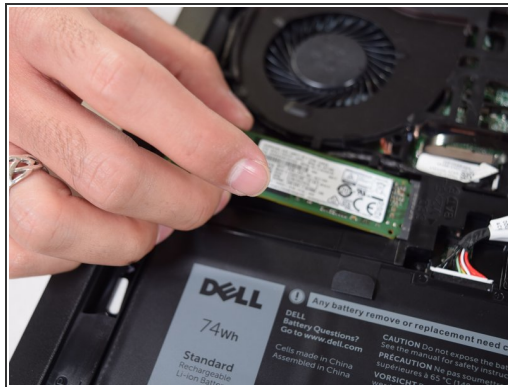
- Locate the SSD, it is located in the center on the far left.

Step 5



- Unscrew the 3mm Philips #1 screw that is holding the SSD in place.

Step 6



- Gently pull out the SSD, horizontally along the computer to remove it.

To reassemble your device, follow these instructions in reverse order.